



CENTAUR®

Centaur Data Sheet

Product Code:

SBR/12W

Product Range:

Surface & Flush
Boxes, Surface Boxes

Issue Date:

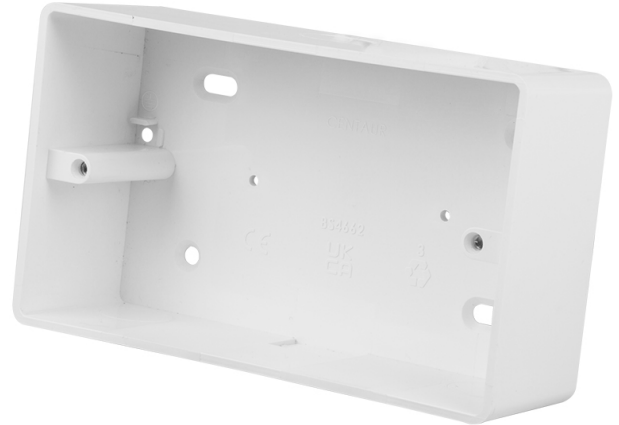
04/06/2026

Description:

2 Gang 47 mm PVCu Surface Box Round
Corners 20 mm KO White

Features:

- Knockouts in sides and base for cable entry
- 3x Conduit & 3x mini trunking knockouts
- Self-extinguishing
- High impact resistant PVCu
- Compliant to BS 4662



Technical:

Country of manufacture	United Kingdom
Material	High Impact Resistant PVCu
Colour finish	White
Packaging type	Each
Pack quantity	5
Product range	Surface Boxes
Self adhesive	No
Standards	BS 5733
Guarantee	10 Year
Knockouts	3x Conduit & 3x Mini Trunking
Lug type	Fixed
Depth	47 mm
Self extinguishing	Yes