



CENTAUR®

Centaur Data Sheet

Product Code:

CTA 41W

Product Range:

Campus

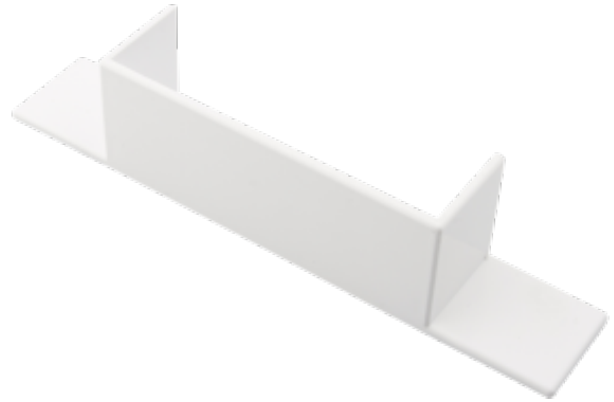
Issue Date:

04/06/2026

Description:

CMXT 41 Entry/Adaptor

Features:



Technical:

Material	High Impact Resistant PVCu
Weight	0.100 kg
Colour finish	White
Packaging type	Each
Product range	Campus Trunking Accessories
Self adhesive	No
Guarantee	10 Year
Self extinguishing	Yes